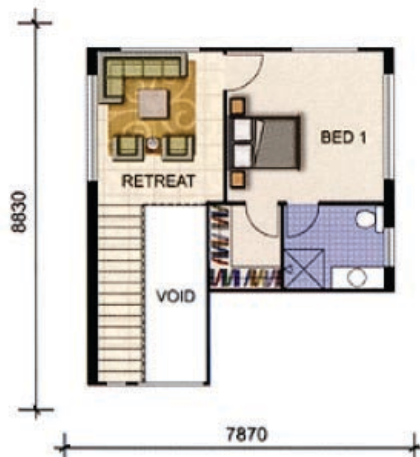
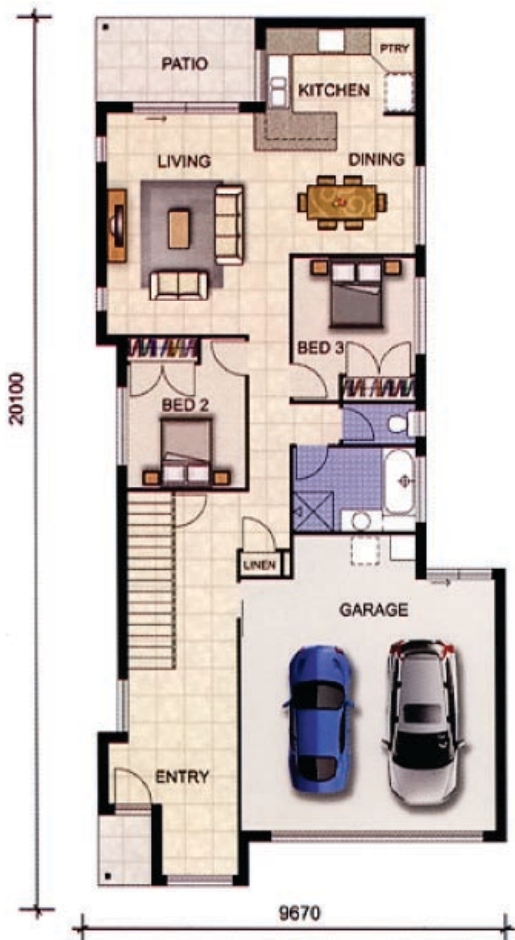




Ardina



-  3
-  2
-  2



Lower 140sqm
Upper 45 sqm
Porch 2 sqm
Patio 7 sqm

Total 194 sqm

DQH
Dwyer Quality Homes

Since 1985

Artists Impression Only
Subject to Change Without Notice

DQH COPYRIGHT 2009
ABN 80 010 839 139-BSA 22078



more than
meets the eye...

Since 1985

5 September 2009

Sergio Giavon
Sales Director
Woolshed Grove

Hi Sergio,

As requested house and land package prices for Woolshed Grove.

All homes can be sited on any of the blocks I have chosen, which are Lots 19, 21 and 53.

All packages are for turnkey homes which include floor coverings, light fittings, vertical drape allowance, fly screens, selected gravel exposed aggregate driveway and path (60m²) and landscaping allowance (PS\$9,000.00). Fencing is not included at this stage.

The homes are based on up to 500mm fall across the home and up to 'M' type soils.

Costs to construct are subject to soil test and engineers slab design and are:

Our MILAN design,	Lots 19 and 21	\$200,750.00	Total package from	\$530,750.00
	Lot 53	\$216,350.00	Total package from	\$561,350.00
Our ARDINA design,	Lots 19 and 21	\$232,200.00	Total package from	\$562,200.00
	Lot 53	\$250,200.00	Total package from	\$595,200.00
Our SALENTO design,	Lots 19 and 21	\$273,550.00	Total package from	\$603,550.00
	Lot 53	\$291,550.00	Total package from	\$636,550.00
Our SAMARA design,	Lots 19 and 21	\$331,000.00	Total package from	\$661,000.00
	Lot 53	\$355,000.00	Total package from	\$700,000.00

Total package prices include your land costs of:

Lot 21:	\$330,000.00 (Note: Lot 19 is \$335,000.00 so total packages are \$5,000.00 dearer for Lot 19)
Lot 53:	\$345,000.00